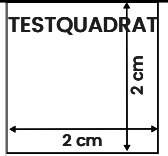
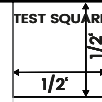


SCHNITTCHEN PATTERNS

Schnittmuster Kleid Caroline /
Sewing Pattern Caroline Dress

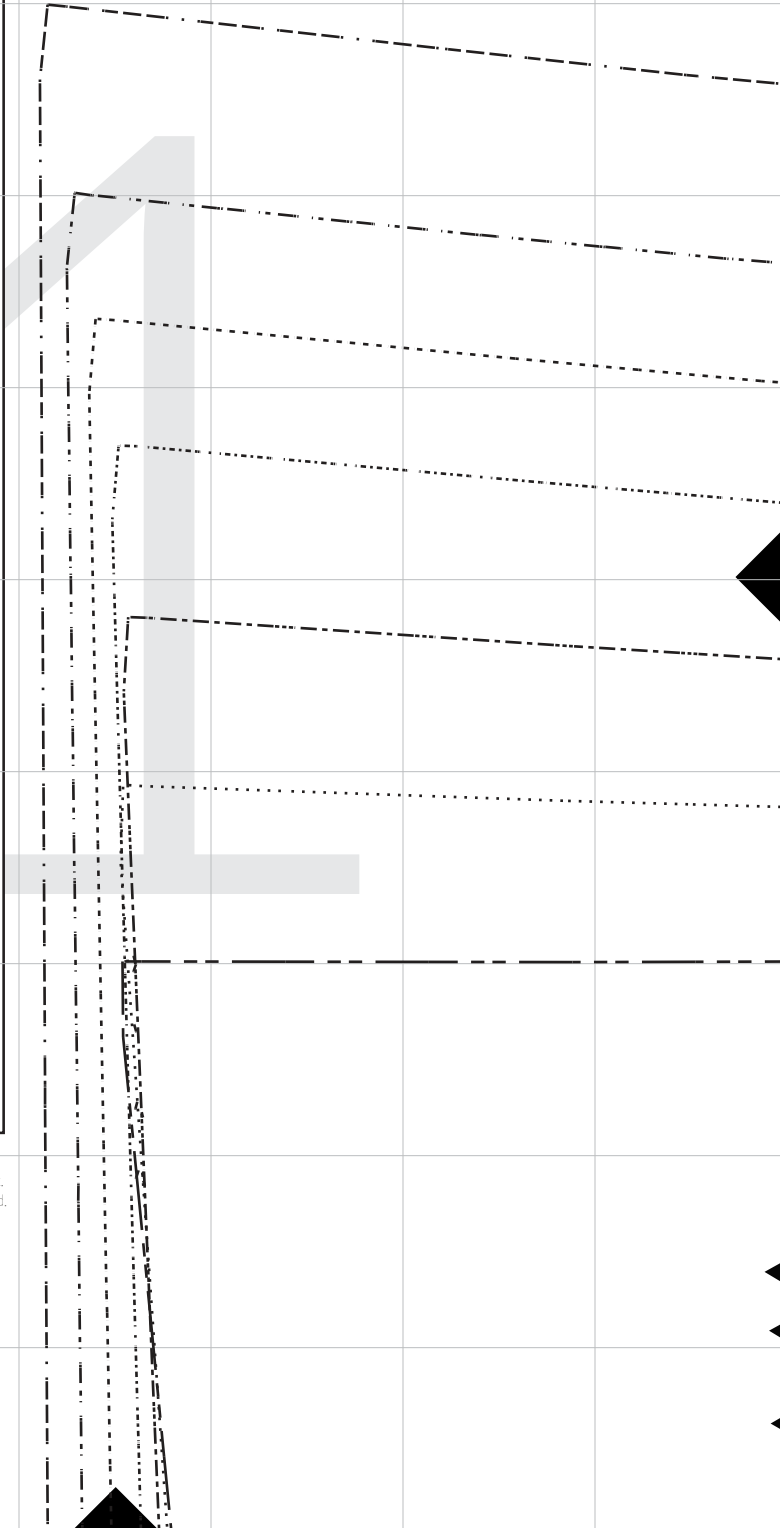


Größenlegende Size Key

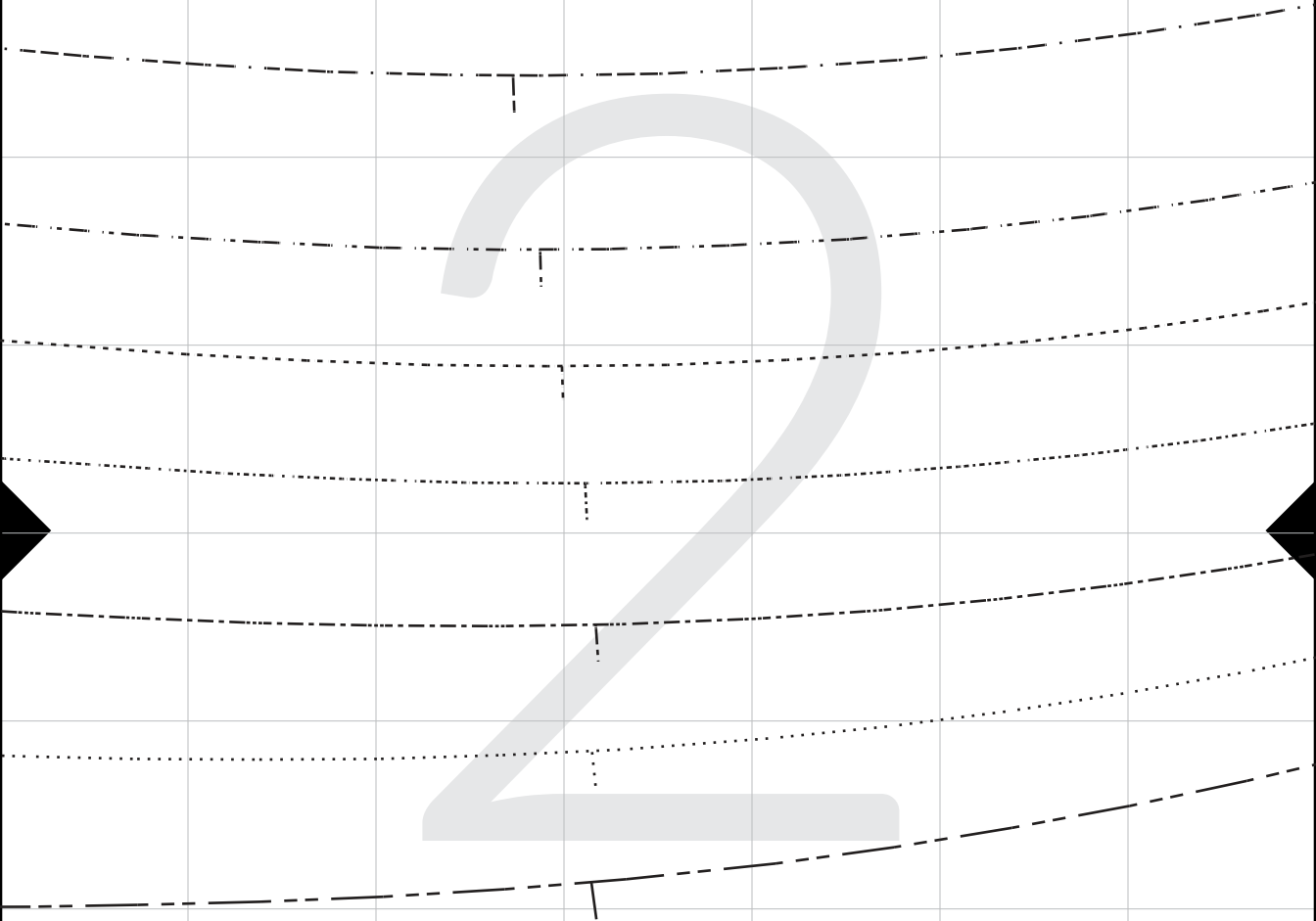
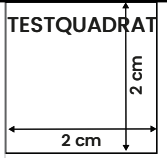
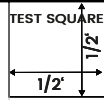
EUR 34 UK 6 US 2	
EUR 36 UK 8 US 4	
EUR 38 UK 10 US 6	
EUR 40 UK 12 US 8	
EUR 42 UK 14 US 10	
EUR 44 UK 16 US 12	
EUR 46 UK 18 US 14	
EUR 48 UK 20 US 16	
EUR 50 UK 22 US 18	
EUR 52 UK 24 US 20	
EUR 54 UK 26 US 22	
EUR 56 UK 28 US 24	
XS	
S	
M	
L	
XL	

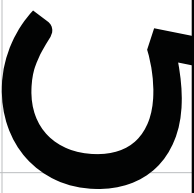
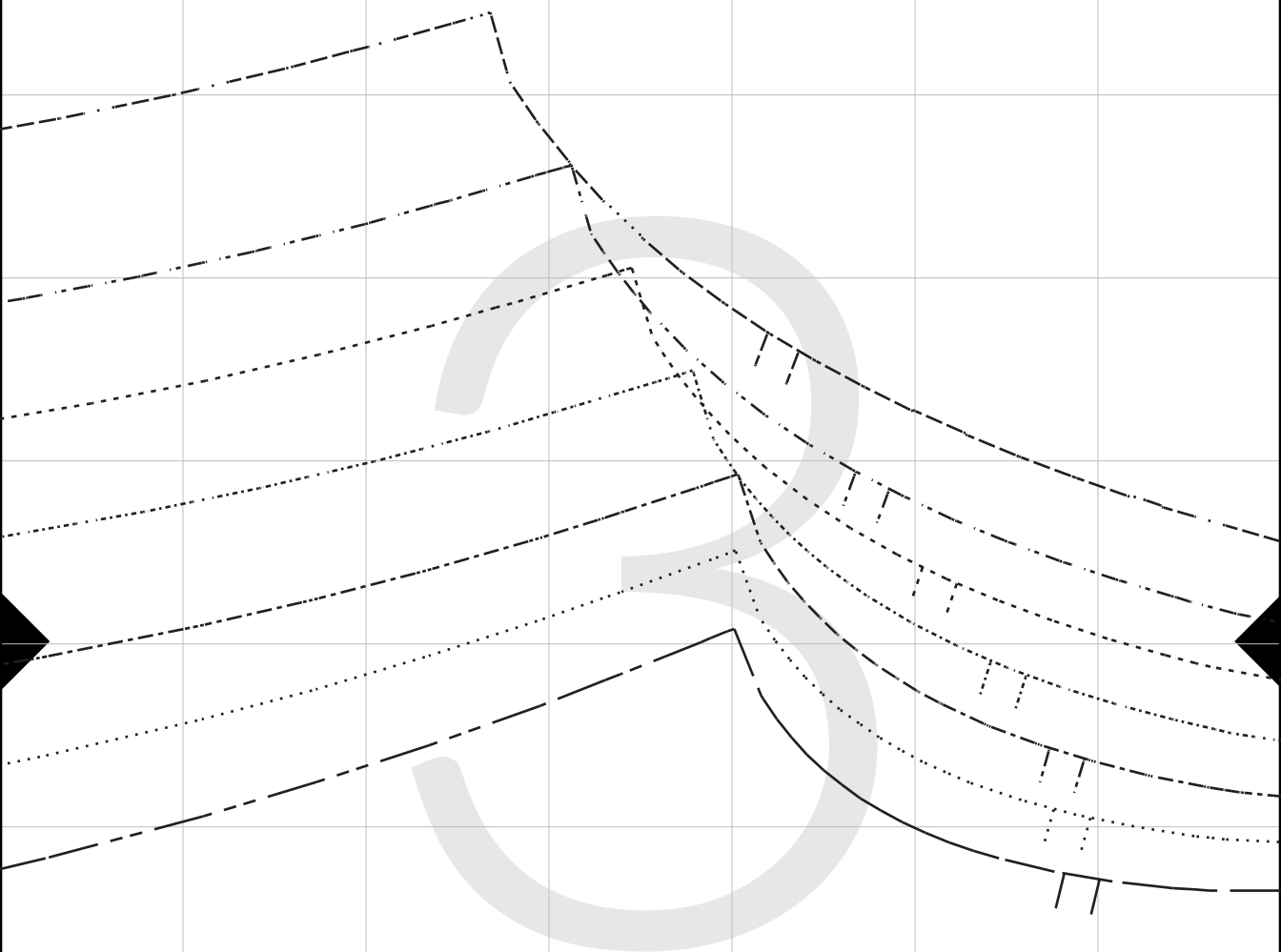
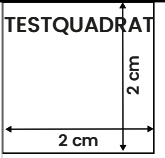
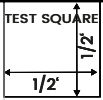
Im Bruch legen /
Place on Fold

Fadenlauf /
Grainline

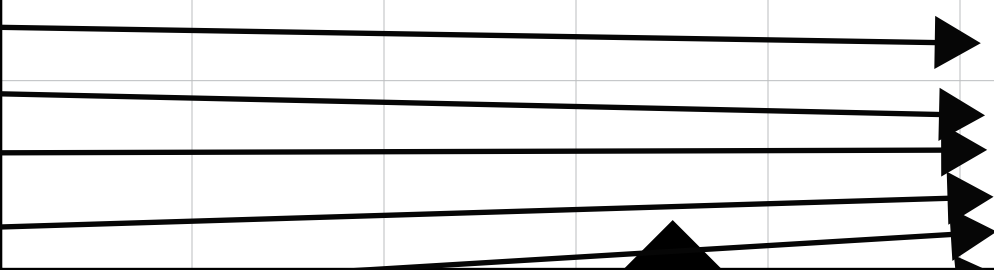


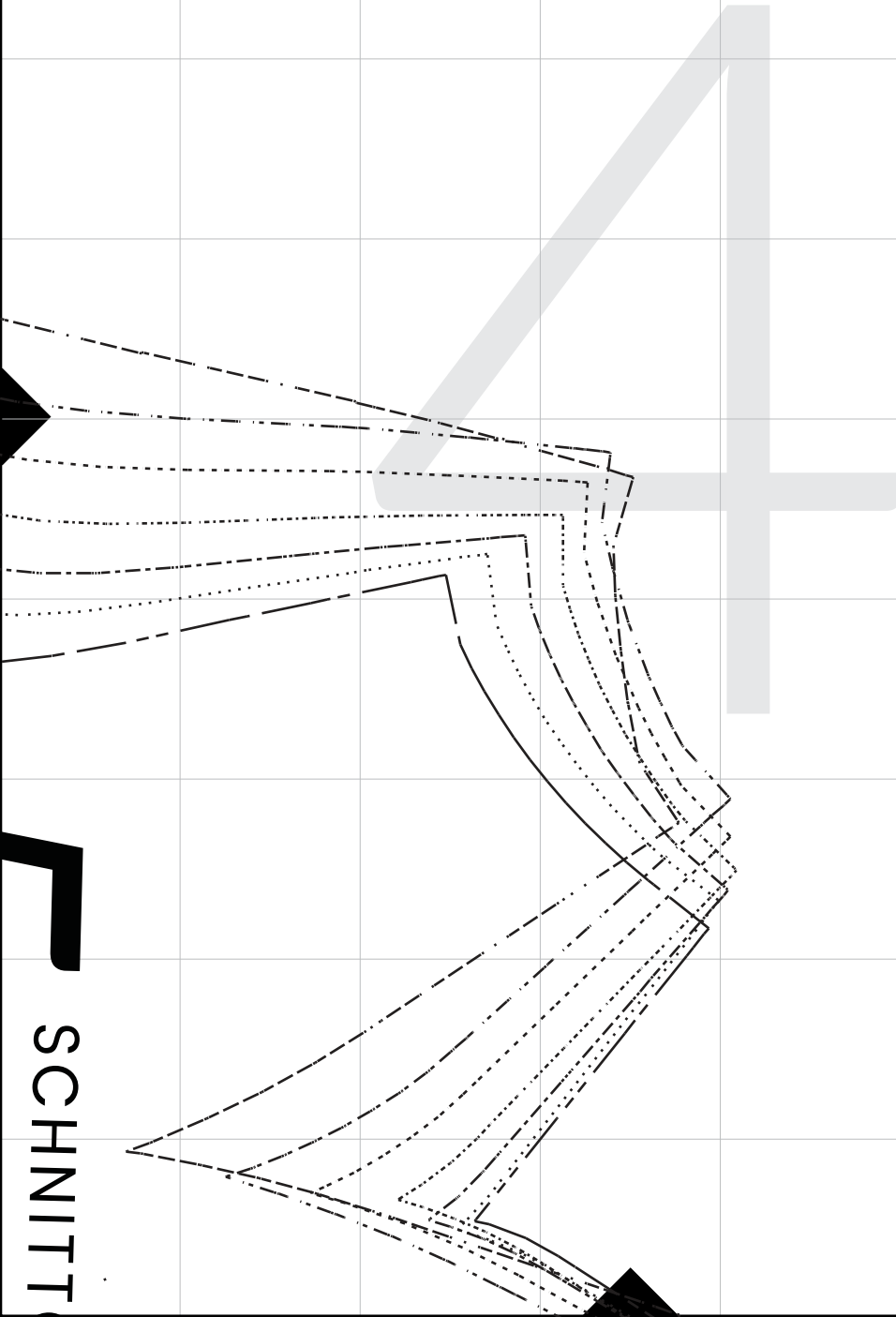
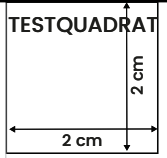
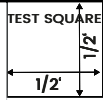
Dieses Schnittmuster ist urheberrechtlich geschützt © 2024, schnittchen patterns. Alle Rechte vorbehalten. Kopieren und Weiterverkauf ist untersagt.
/ This pattern is Copyright © 2023 schnittchen patterns. All Rights Reserved.
Copying and/or distributing is strictly prohibited.

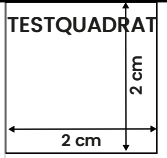
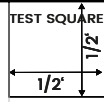




Caroline - Ärr
2x

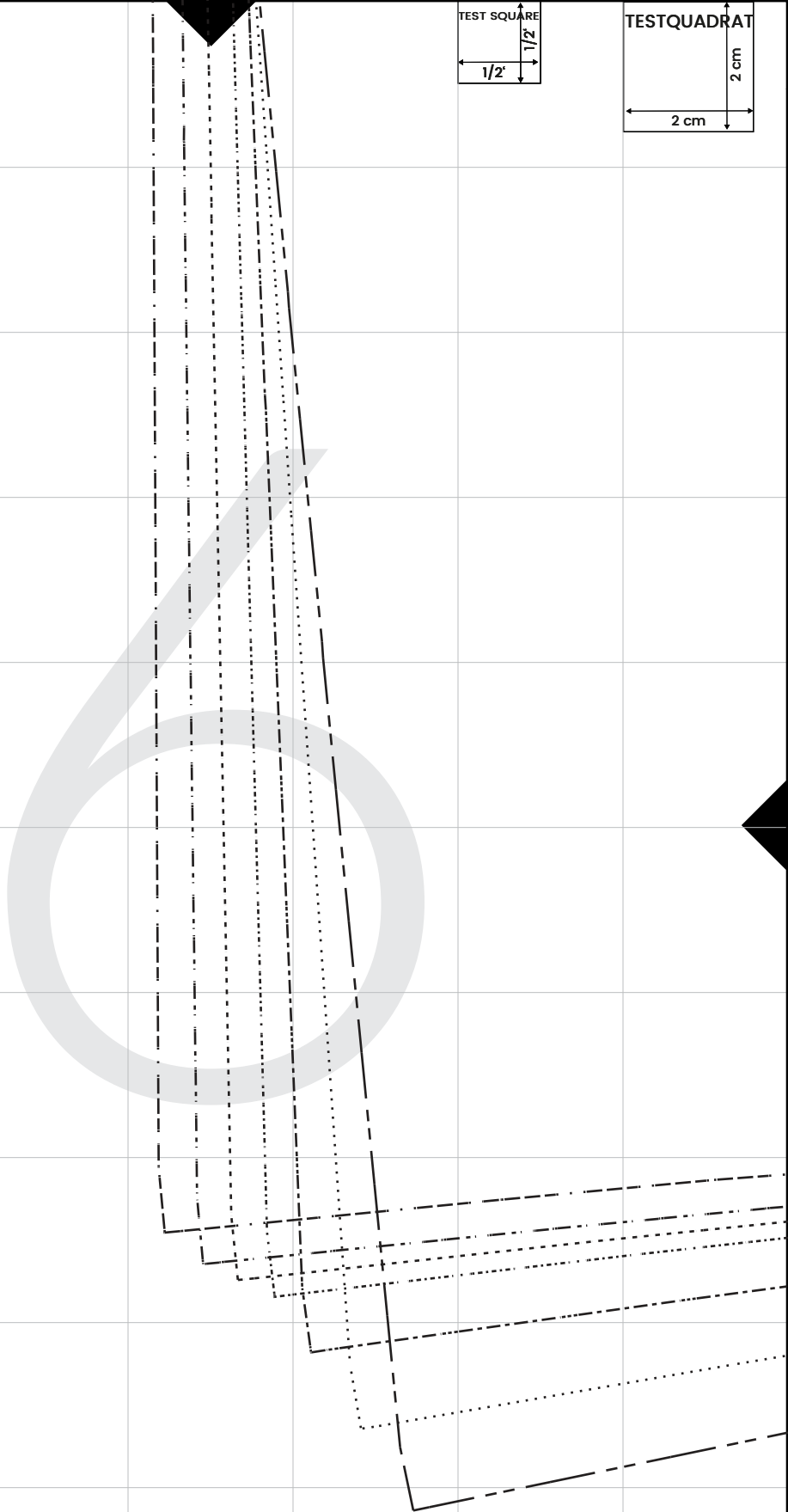
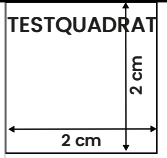
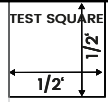


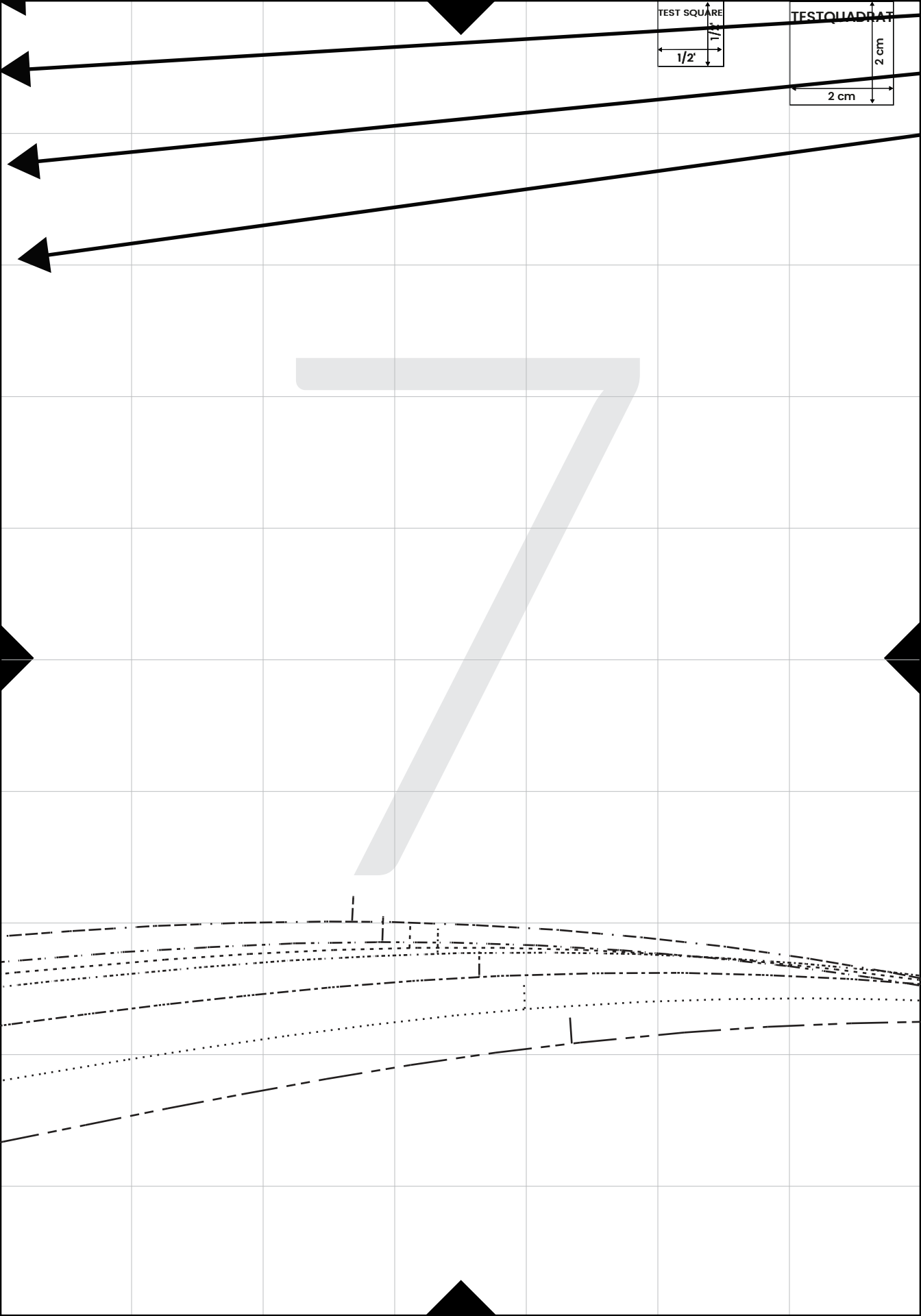




5







TEST SQUARE

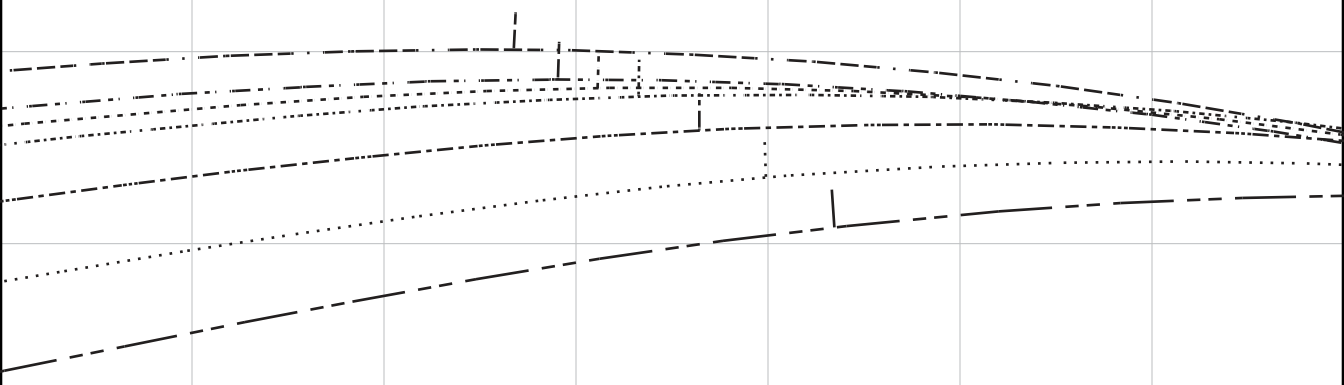
1/2'

1/2'

TESTQUADRAT

2 cm

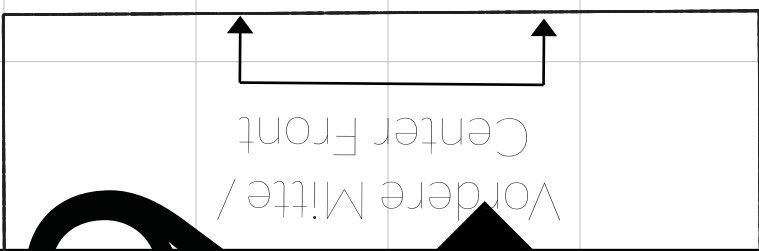
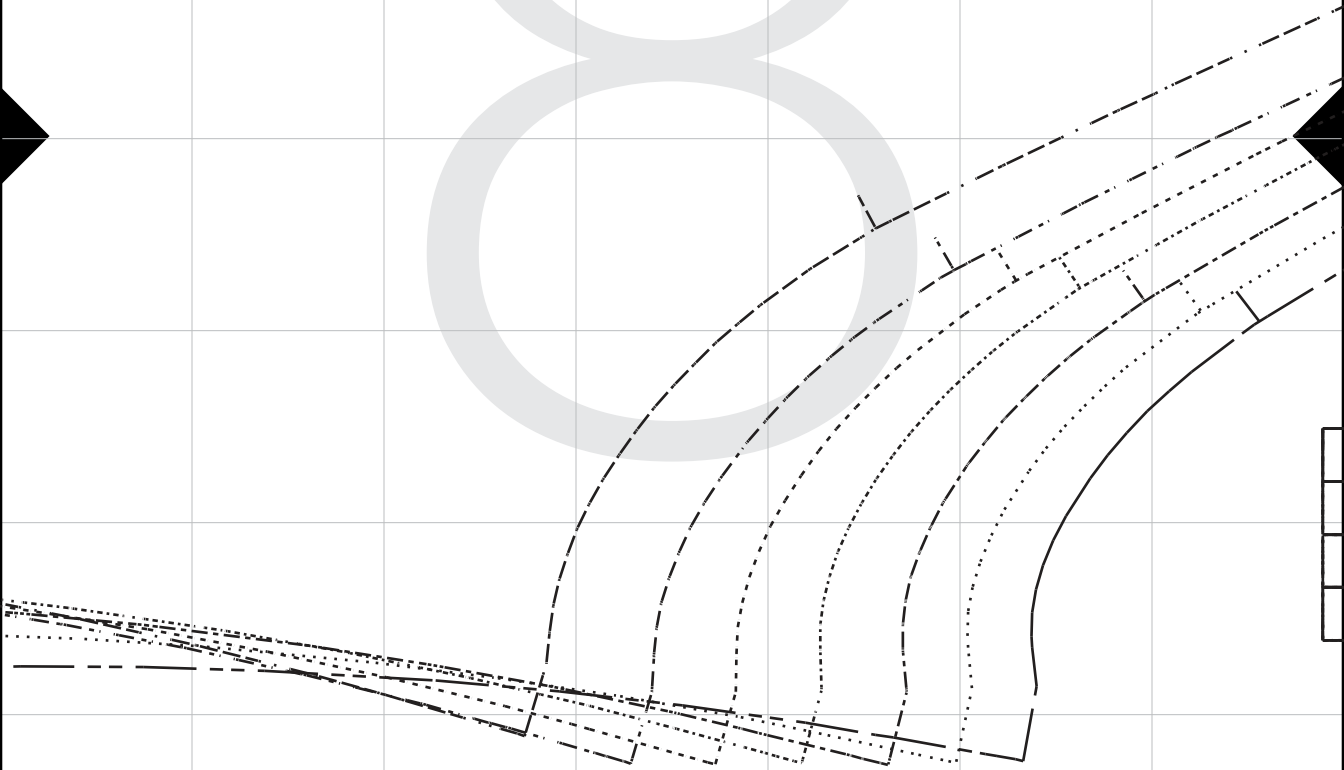
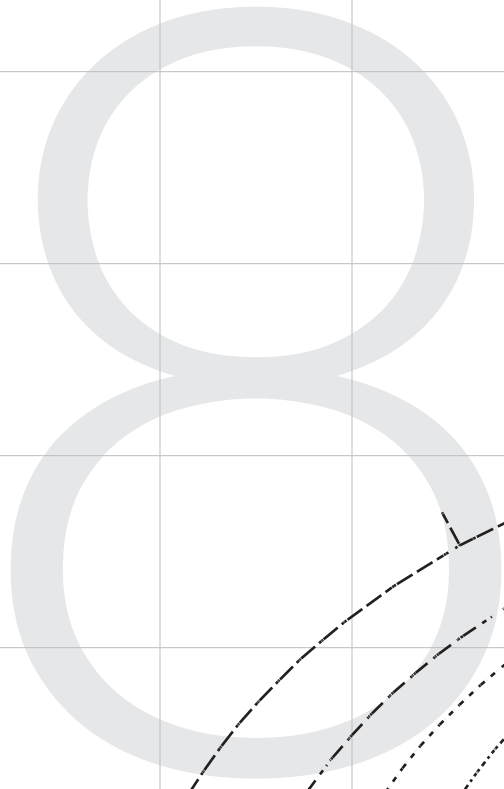
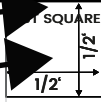
2 cm

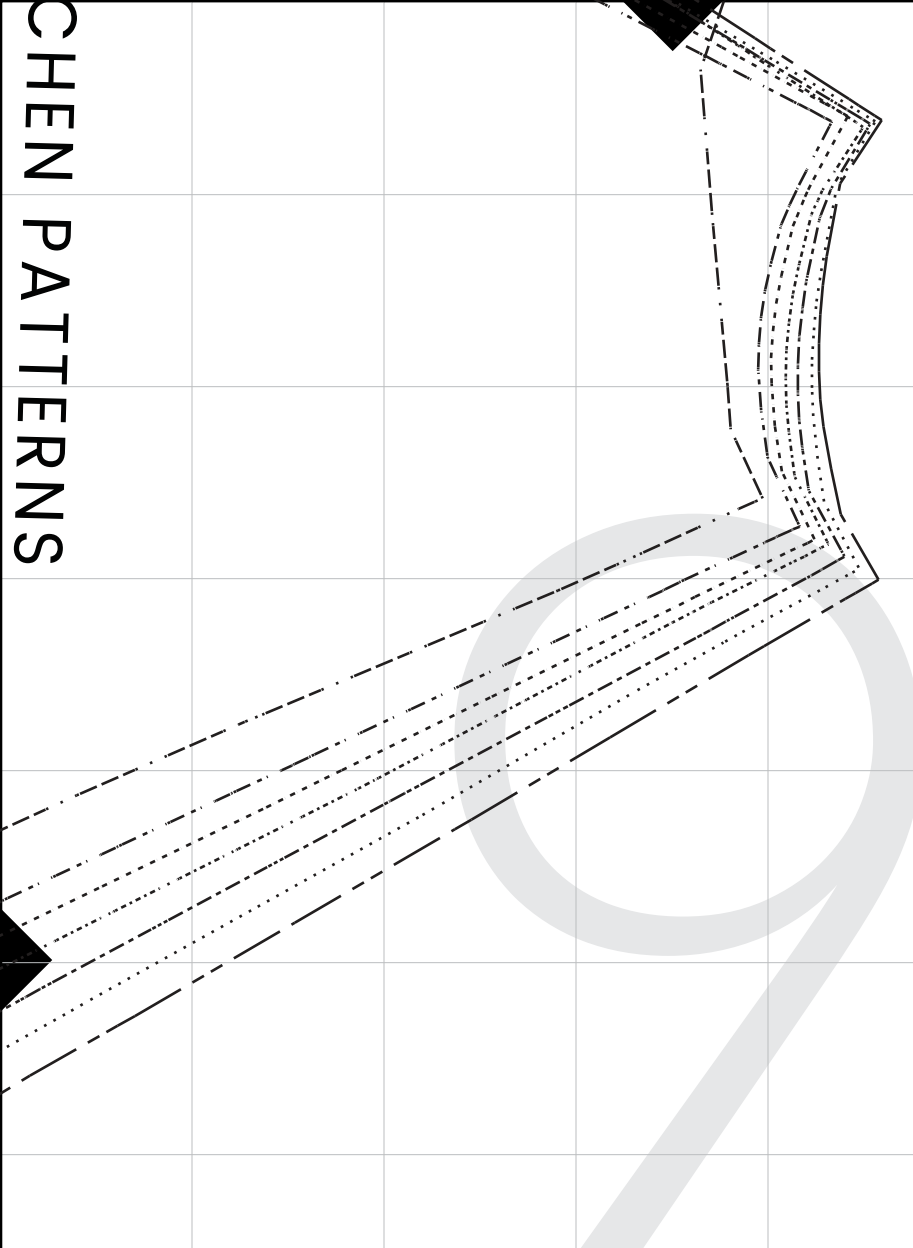
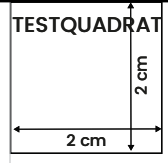
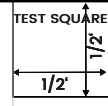


TESTQUAD

Model / Sleeve

2 cm

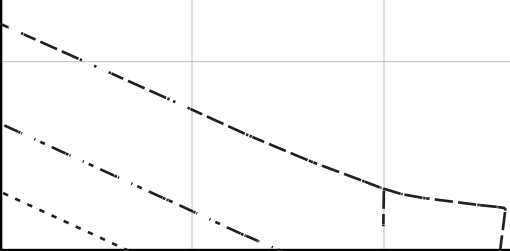


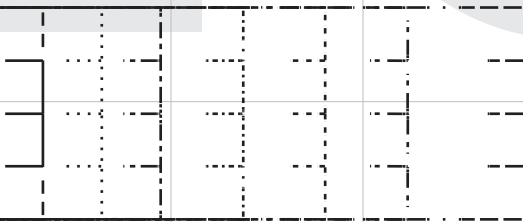
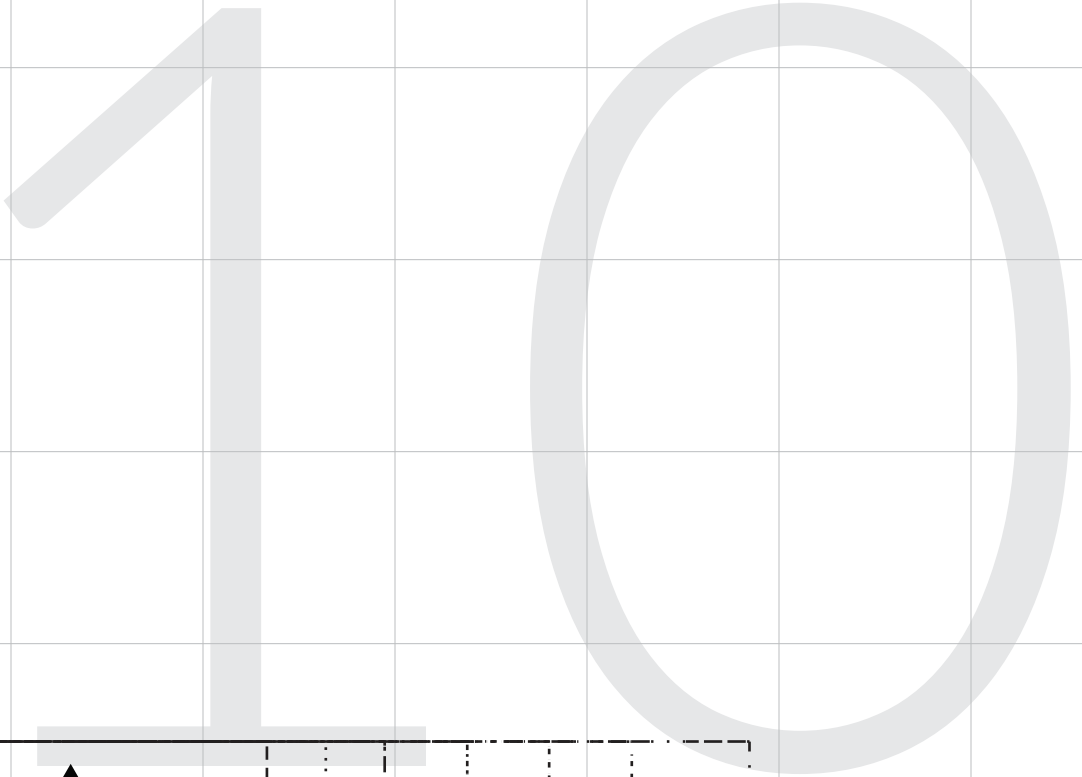
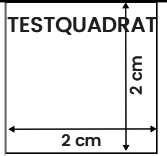
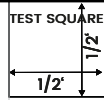


10

SCHNITTCHEN PATTERNS

Caroline - Ärmelband / Sleeve Bias Tape
2x





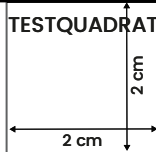
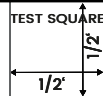
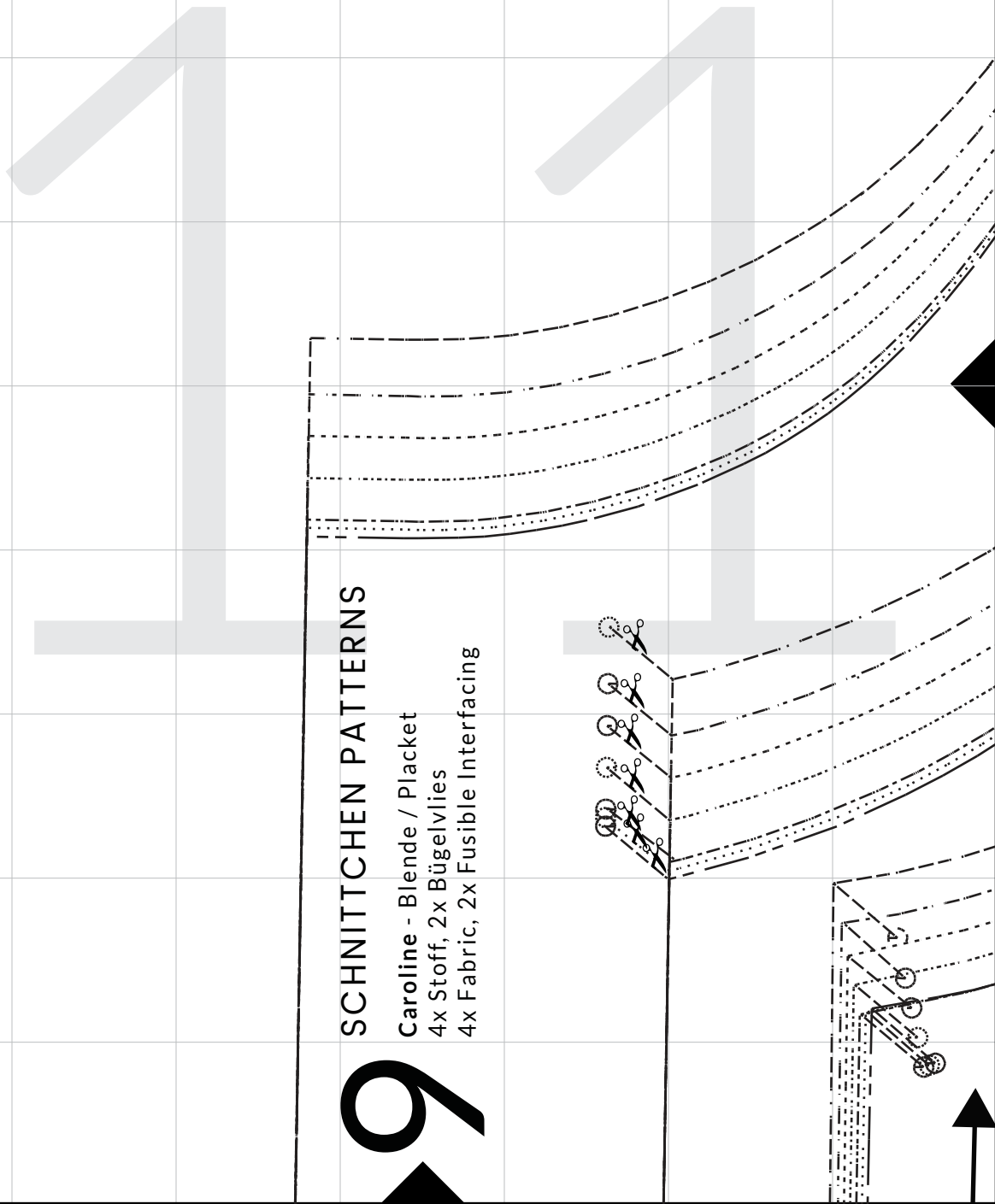
9

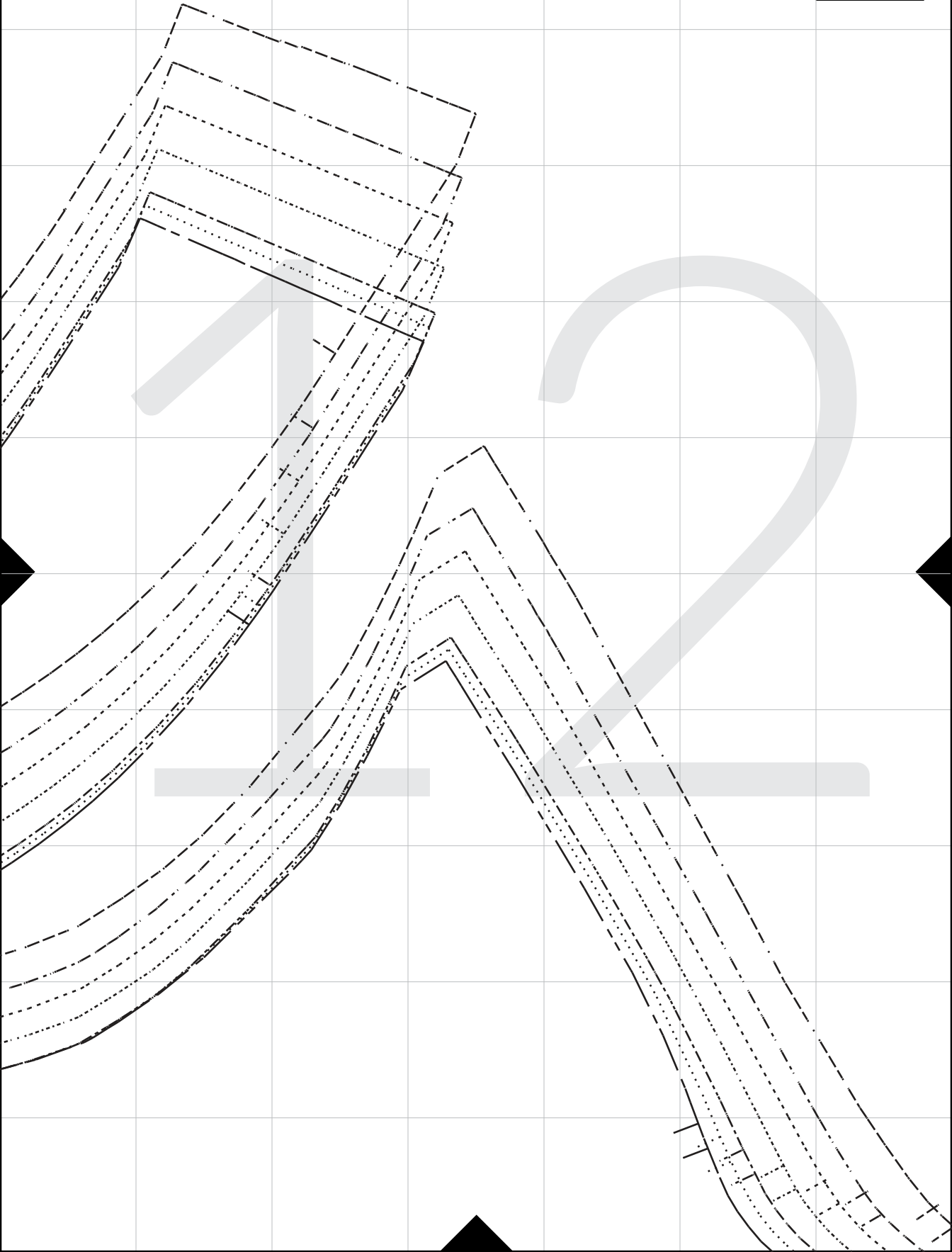
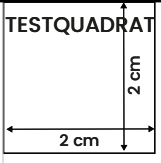
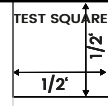
SCHNITTCHEN PATTERNS

Caroline - Blende / Placket

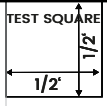
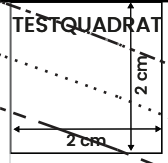
4x Stoff, 2x Bügelvlies

4x Fabric, 2x Fusible Interfacing



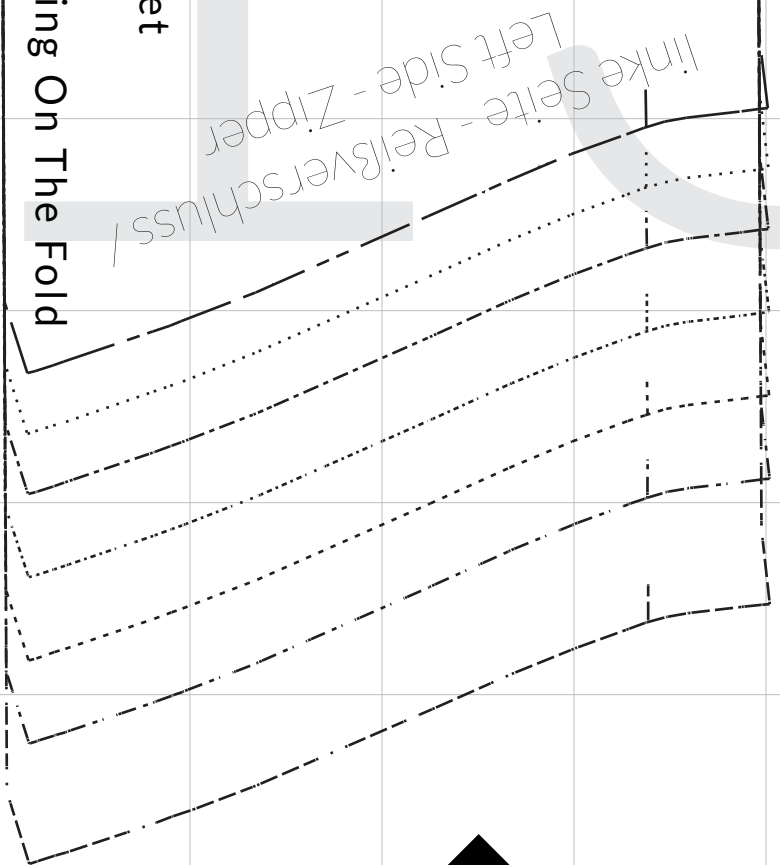


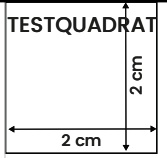
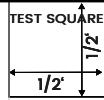
Caroline - rückwärtiges Mieder / Back Corselet
2x Stoff im Bruch, 1x Bügelvlies im Bruch
2x Fabric On The Fold, 1x Fusible Interfacing On The Fold



SCHNITTCHEN PATTERNS

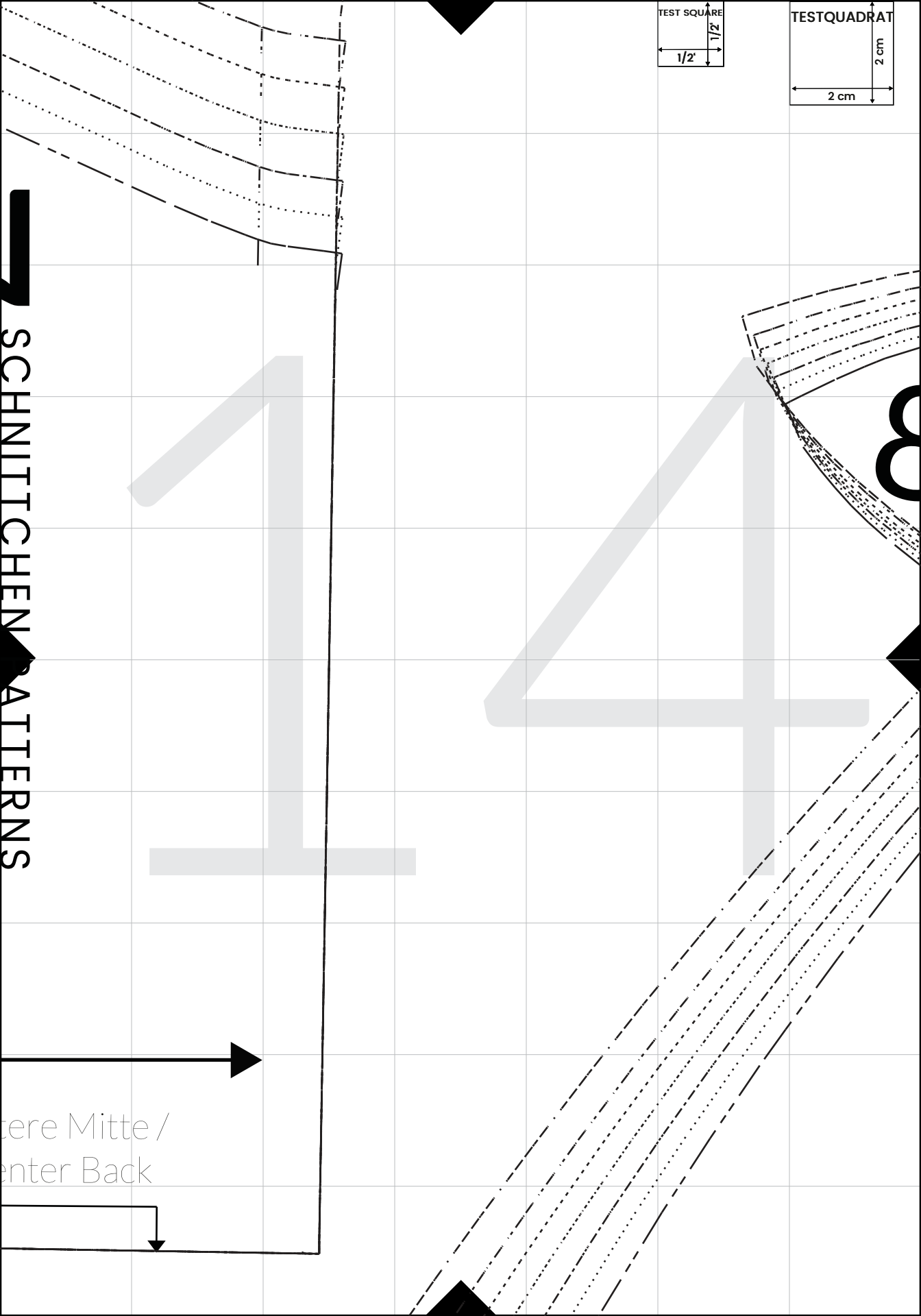
Caroline - vorderes Mieder / Front Corselet
2x Stoff im Bruch, 1x Bügelvlies im Bruch
2x Fabric On The Fold, 1x Fusible Interfacing On The Fold

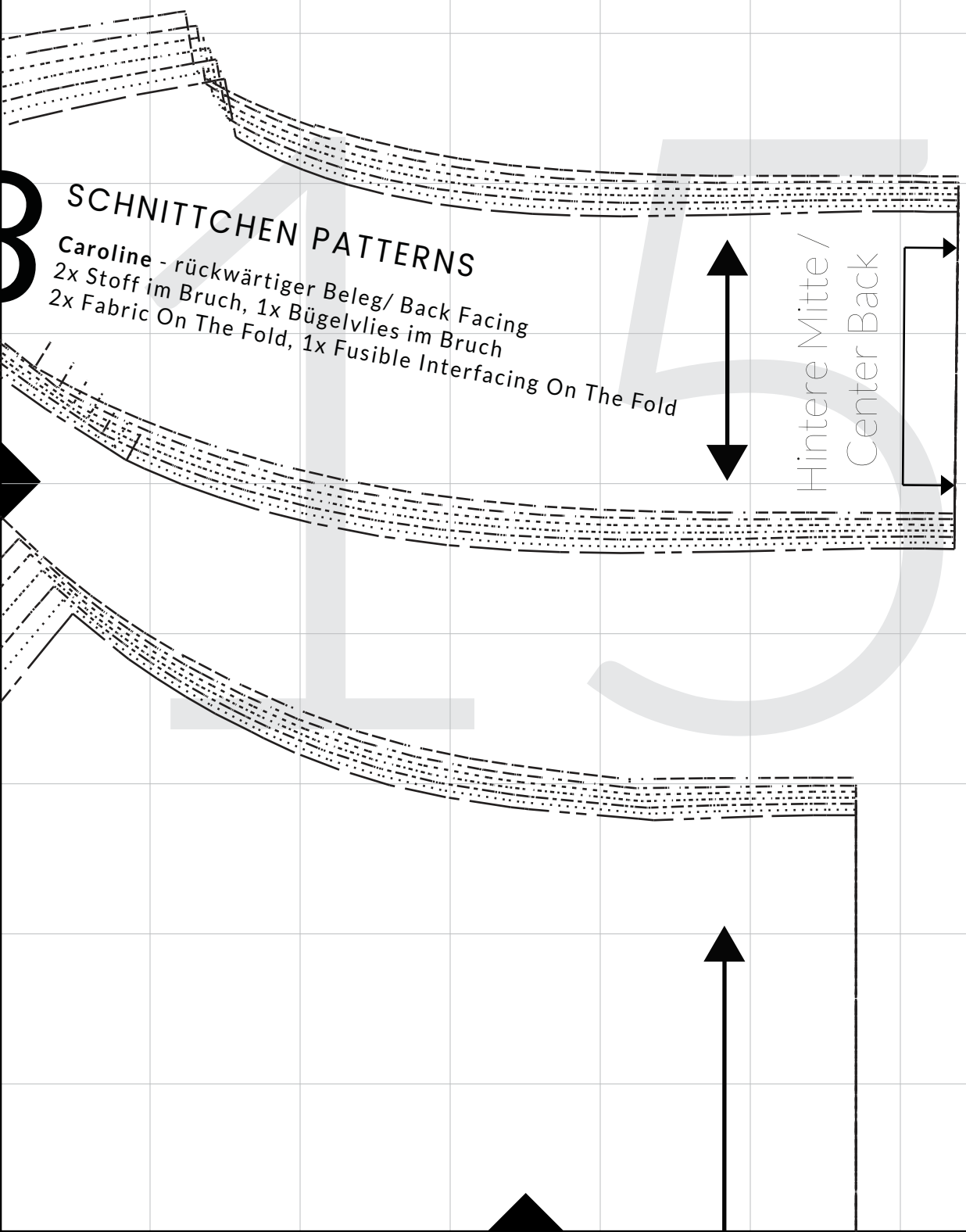
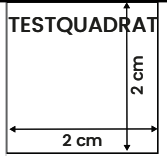
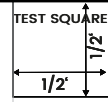




SCHNITTCHEN PATTERNS

tere Mitte /
enter Back

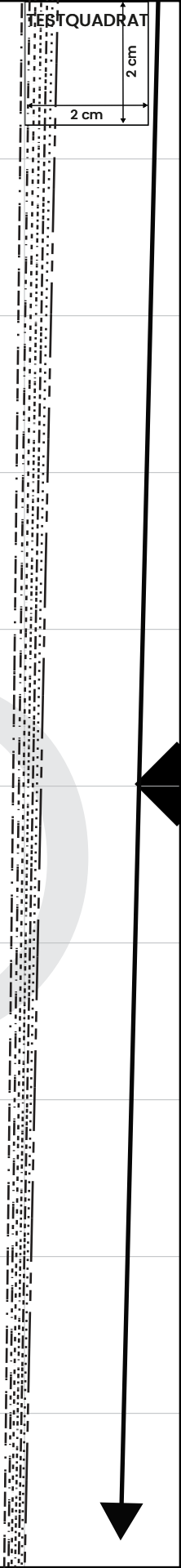
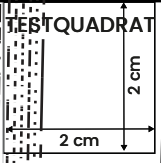
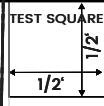
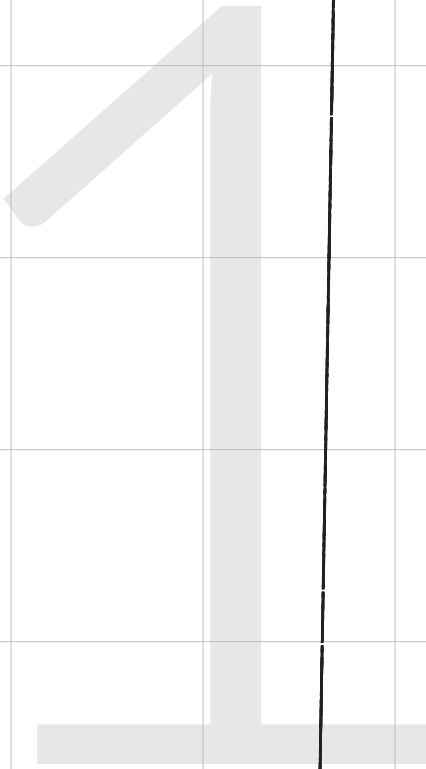


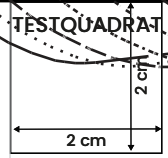
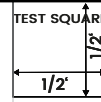


SCHNITTCHEN PATTERNS

Caroline - rückwärtiger Beleg/ Back Facing
2x Stoff im Bruch, 1x Bügelvlies im Bruch
2x Fabric On The Fold, 1x Fusible Interfacing On The Fold

Hintere Mitte /
Center Back



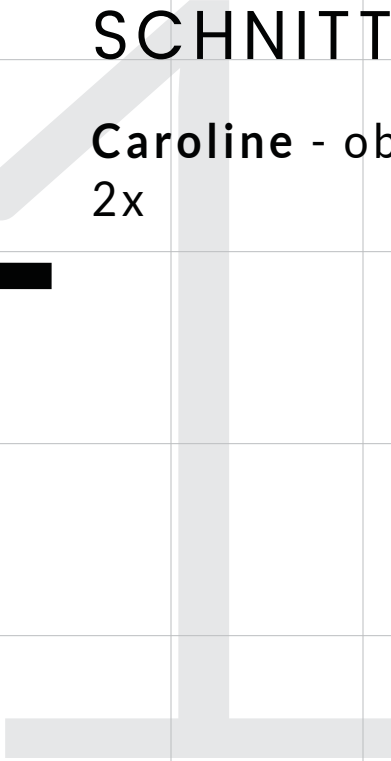


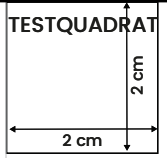
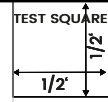
linke Seite - Reißverschluss
Left Side - Zipper

1

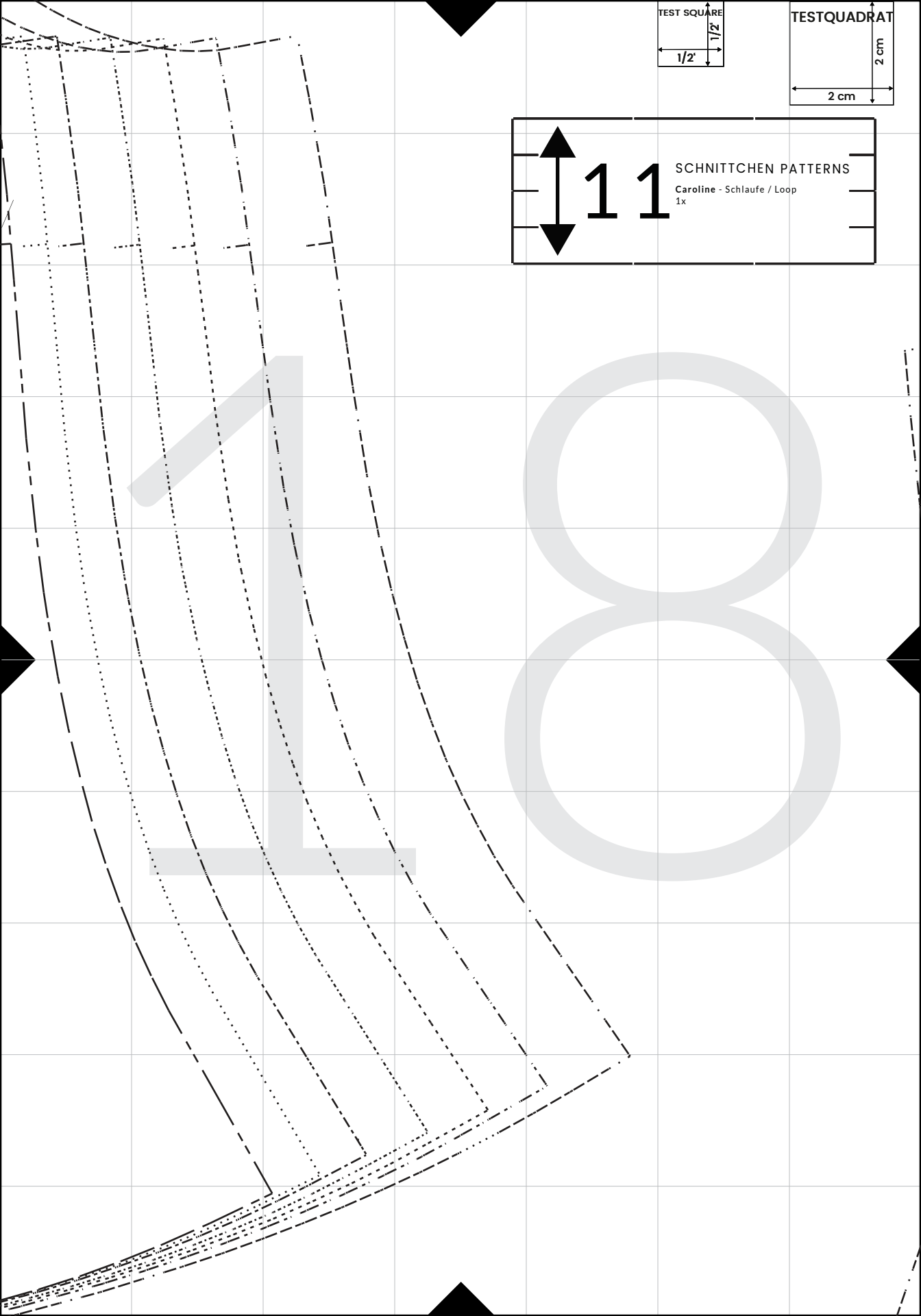
SCHNITTCHEN PATTERNS

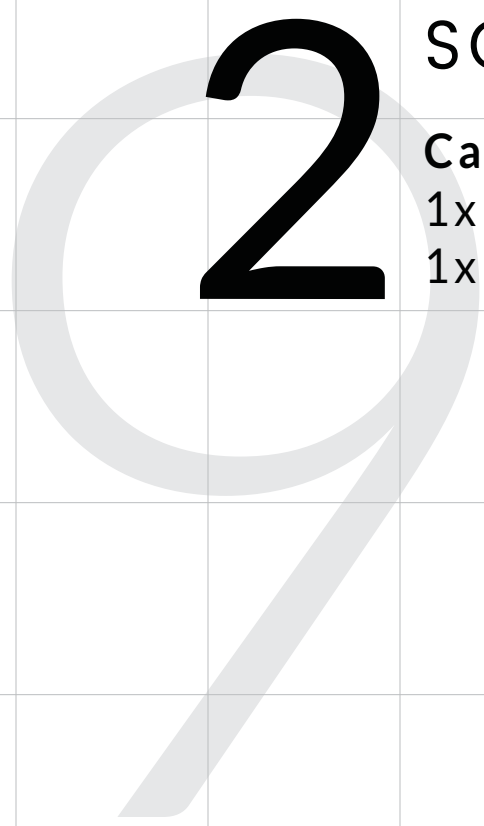
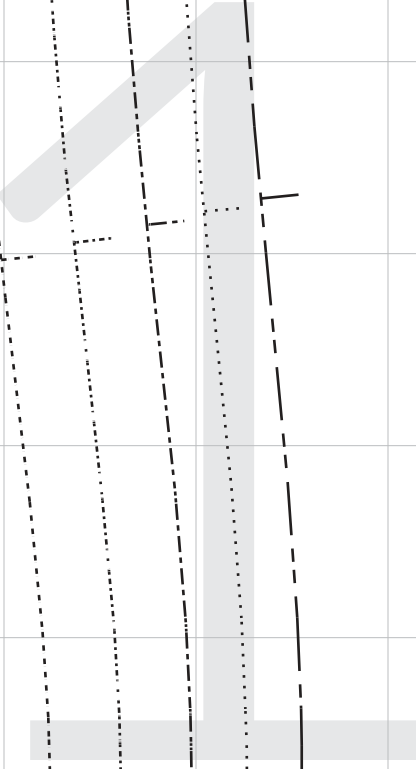
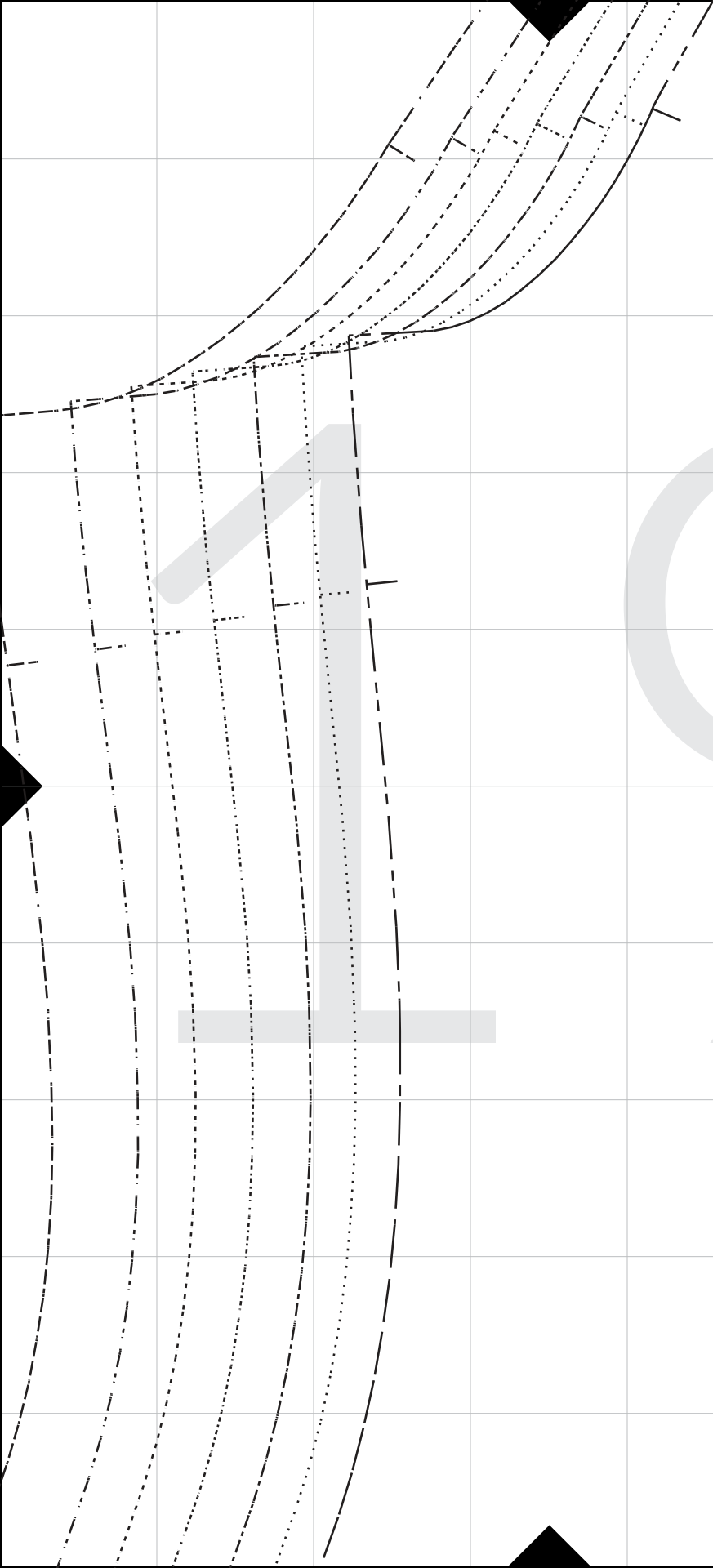
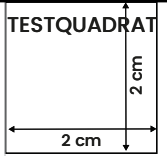
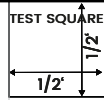
Caroline - oberes Vorderteil / Front Bodice
2x





 **1 1** SCHNITTCHEN PATTERNS
Caroline - Schlaufe / Loop
1x





SCHM

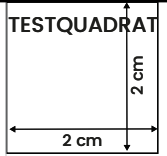
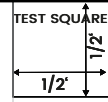
Carolin

1x im B

1x On T

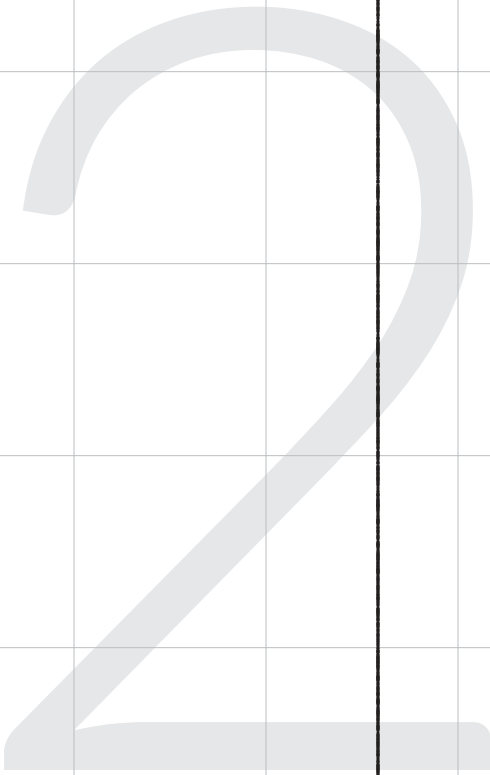
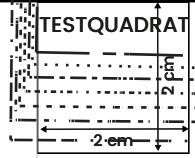
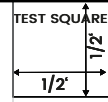
NITTCHEN PATTERNS

e - oberes Rückenteil / Back Bodice
ruch
The Fold



Hintere Mitte / Center Back





TEST SQUARE

TESTQUADRAT

1/2"

2 cm

2 cm



linke Seite - Reißverschluss
Left Side - Zipper

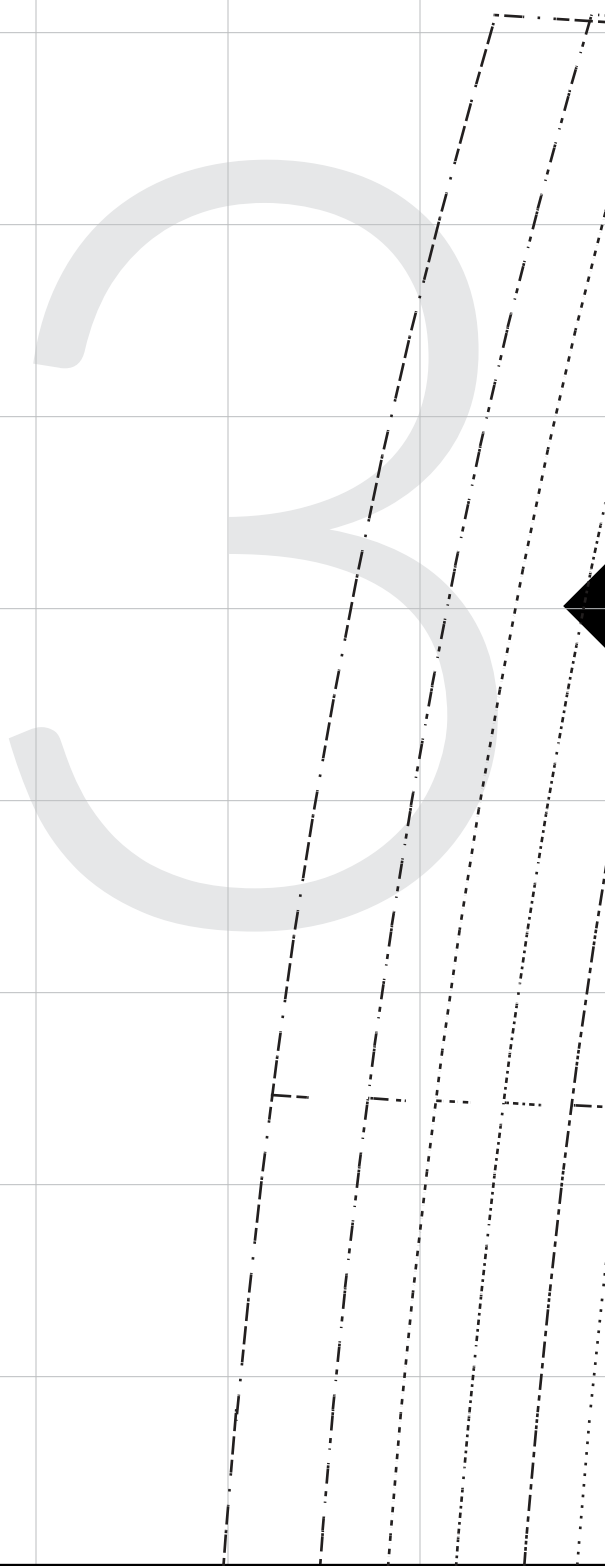
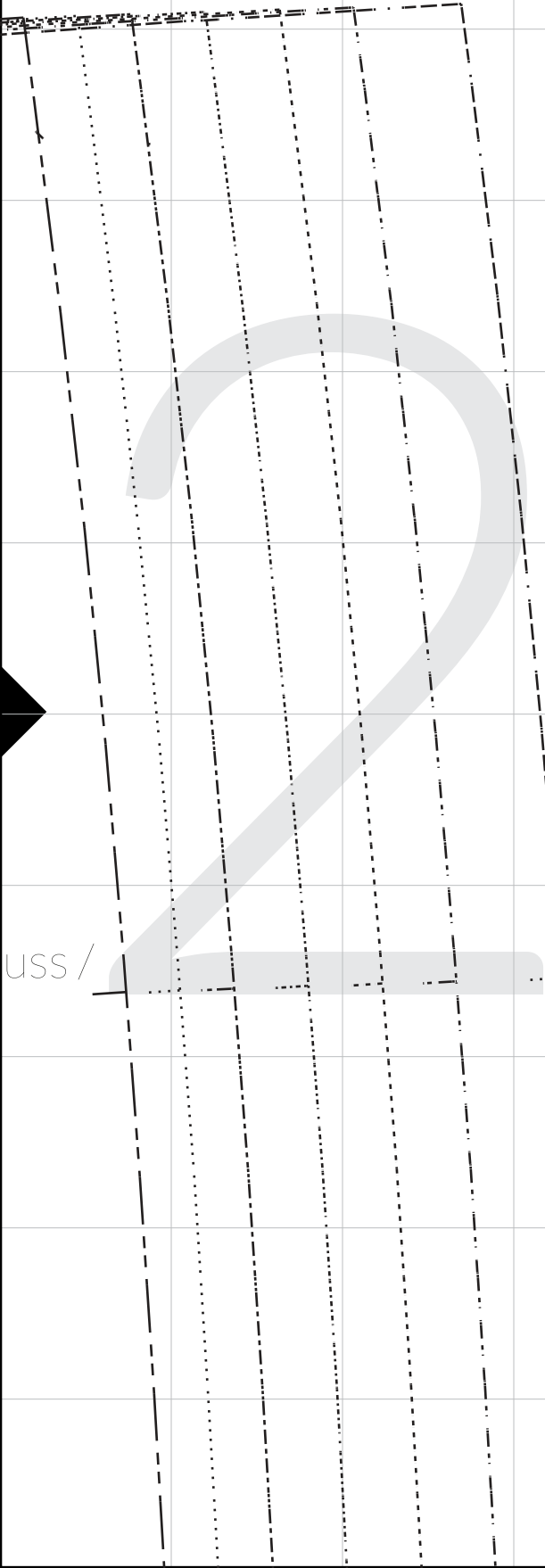
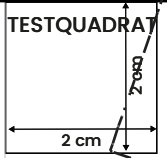
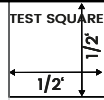
3

SCHNITTCHEN PATTERNS

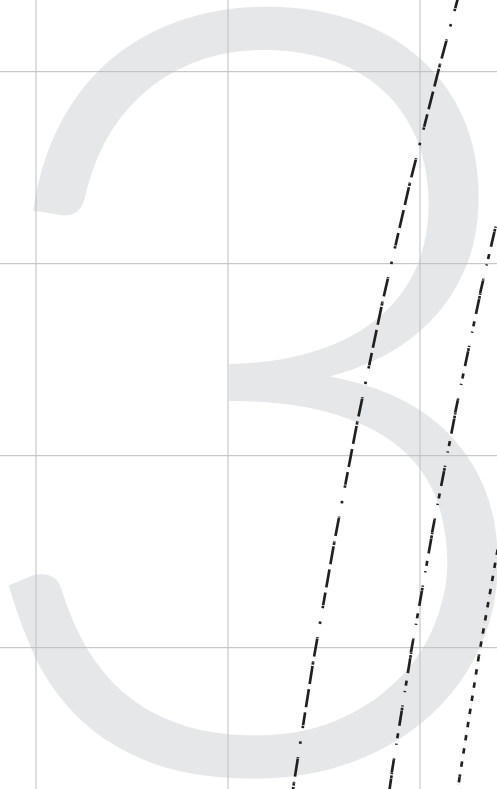
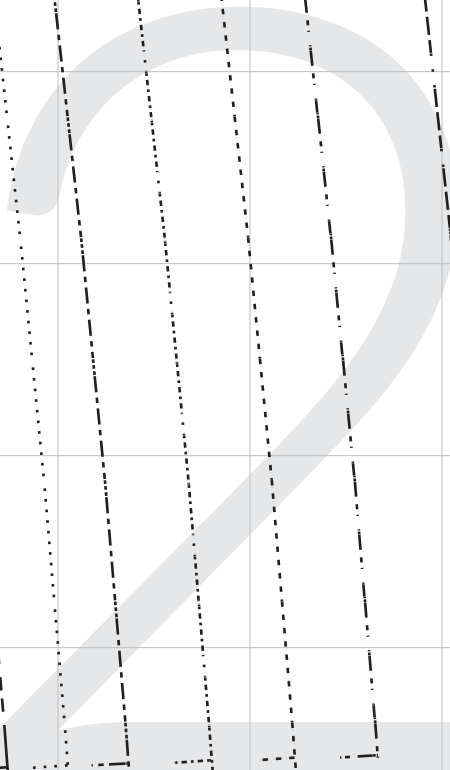
Caroline - vorderer Rock / Front Skirt

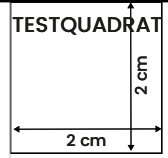
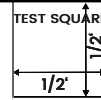
1x im Bruch

1x On The Fold



uss /





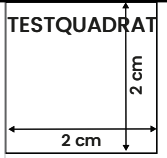
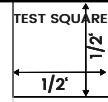
4

SCHNITTCHEN PATTERNS

Caroline - hinterer Rock / Back Skirt

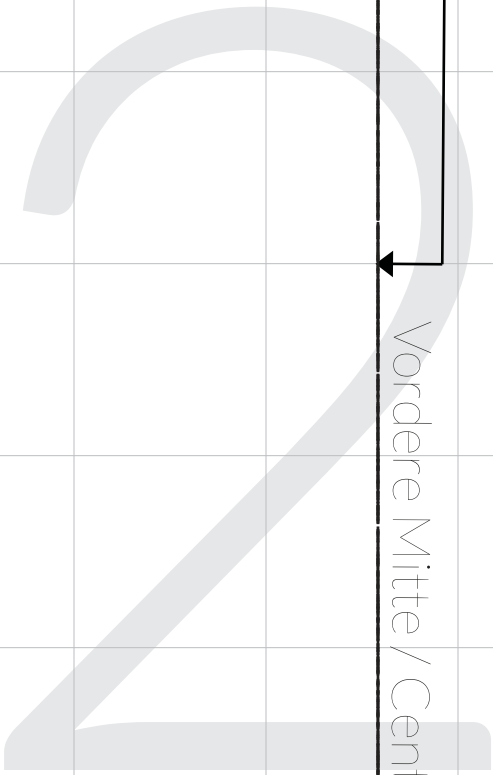
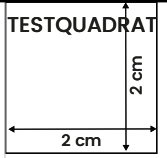
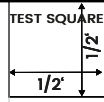
1x im Bruch

1x On The Fold

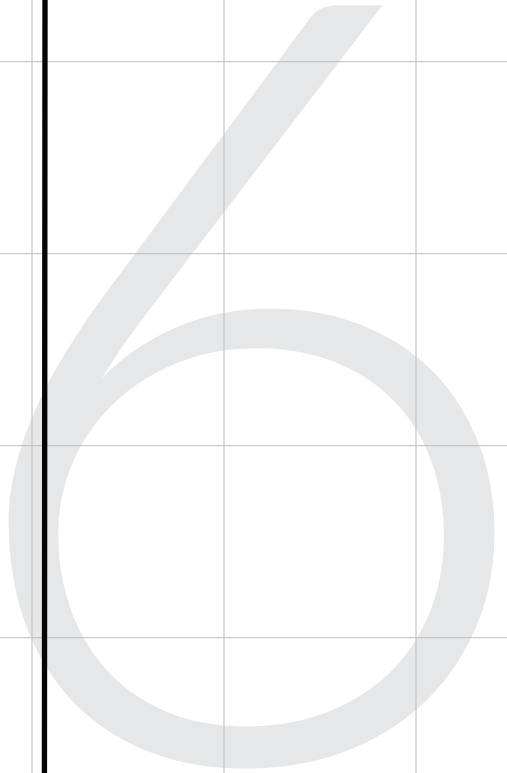


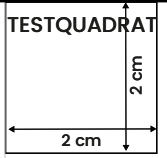
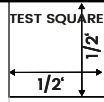
2

5



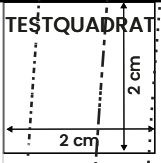
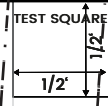
Vordere Mitte / Center Front





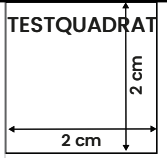
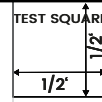
2

7



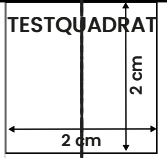
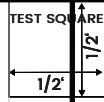
2

8

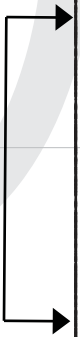


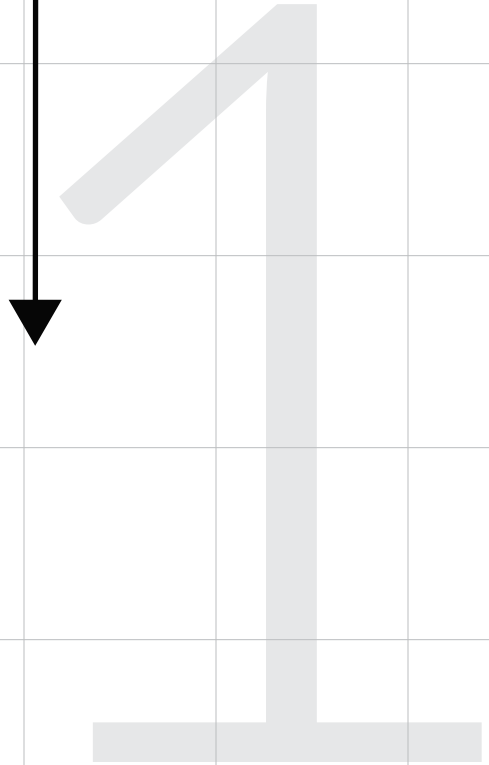
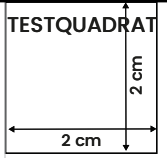
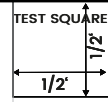
2

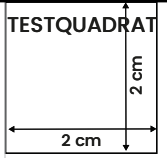
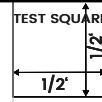
9



Hintere Mitte / Center Back



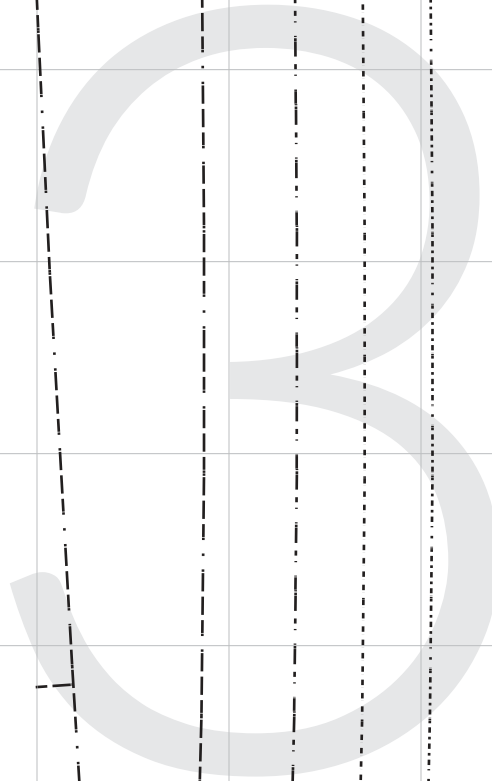
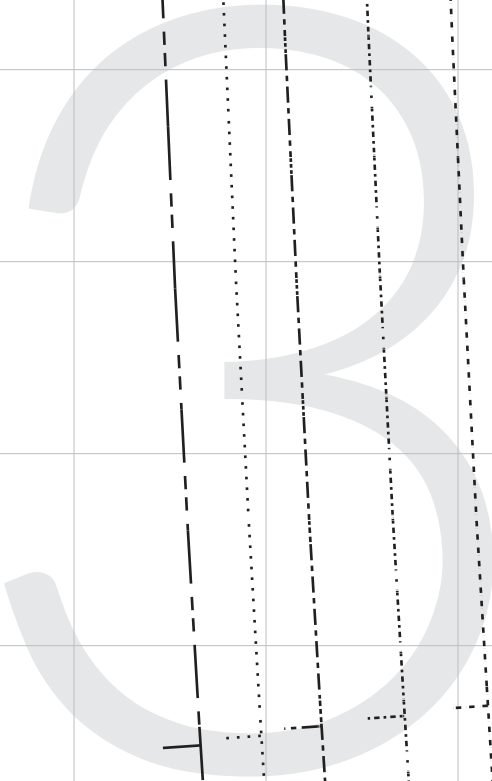
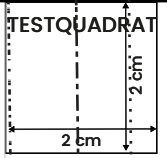
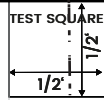


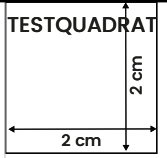
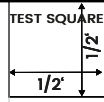


3

2

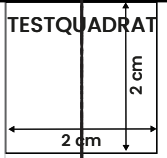
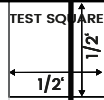






3 4





3 5

Large, light gray numbers '3' and '5' are displayed on a grid. A black arrow points to the left side of the '3'. A black arrow points downwards from the top of the '5'.

